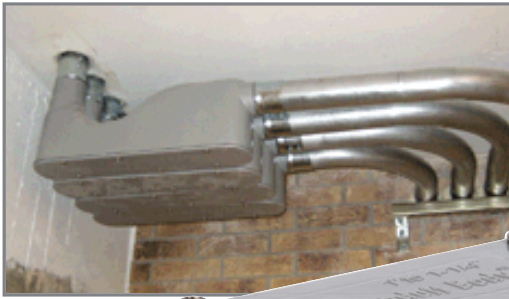




SmartLB

Ahead of the Curve!

Unlike traditional LBs that have a sharp 90-degree corner, Smart LB conduit bodies have a built-in radius that helps prevent cables from getting caught or damaged when pulled around corners. With no sharp edges to damage cable, the gentle bend radius meets ANSI/TIA/EIA 568 & NECA/FOA requirements for pulling Optical Fiber Cable. Smart LB are the only conduit bodies that are recommended by the BICSI TDMM 13th for telecommunication cable. Includes a gasketed cover for wet locations.



[includes]
gasketed cover

DIE CAST ALUMINUM

- Gray powder coat paint finish
- Suitable for indoor, outdoor (OSP) & plenum use
- For use with EMT, IMC, Rigid or Liquid-Tight conduit and fittings

PVC

- Standard gray
- Suitable for indoor / outdoor (OSP) use
- For use with schedule 40 PVC & schedule 80 PVC
- Works with standard PVC cleaner and cement



Item#	Description	Trade Size	Master Carton	Master Weight
KBLB120	1-1/4" SMART LB BODY - DIE CAST ALUMINUM	1-1/4"	20	42.50 lbs.
KBLB250	2-1/2" SMART LB BODY - DIE CAST ALUMINUM	2-1/2"	4	56.00 lbs.
KBLB400	4" SMART LB BODY - DIE CAST ALUMINUM	4"	2	54.80 lbs.
KBLB121	1-1/4" SMART LB BODY - PVC	1-1/4"	20	25.40 lbs.
KBLB251	2-1/2" SMART LB BODY - PVC	2-1/2"	4	29.92 lbs.
KBLB401	4" SMART LB BODY - PVC	4"	2	28.70 lbs.

