

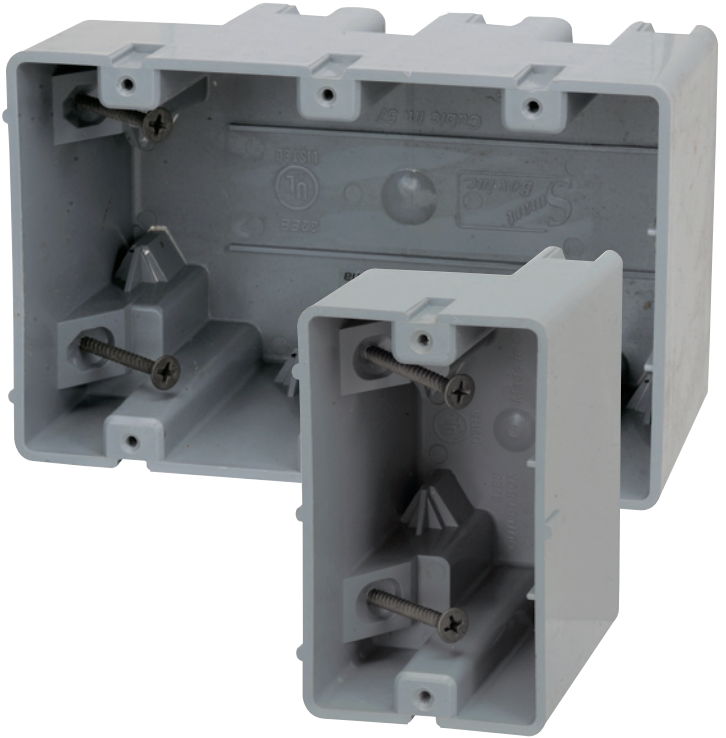


# SmartBox

ORIGINAL

## Designed with the electrician in mind.

The Original Smart Boxes are unmatched in versatility in new work locations where you cannot swing a hammer, or where final wall surfaces are uncertain, like kitchens and baths. Interior mounting screws allow for depth adjustability to accommodate tile, paneling and other specialty wall treatments. Smart Boxes are unmatched in both new or old work applications because they are always mounted to a stud.



- Adjustable depth capacity
- Heavy duty 42 lb. torque mounting screws supplied
- Extra thick PVC wall material for stability and rigidity
- Built in wire clamps
- All 6/32 device holes are threaded
- Boxes are UL Classified for 2 hour fire wall (all but MSB4G)



Item#	Description	Trade Size	Cubic Inch	Master Carton	Master Weight
MSB1G	1 GANG DEVICE BOX	1 GANG	18.5	24	7.30 lbs.
MSB2G	2 GANG DEVICE BOX	2 GANG	38	16	7.15 lbs.
MSB3G	3 GANG DEVICE BOX	3 GANG	57	8	4.70 lbs.
MSB4G	4 GANG DEVICE BOX	4 GANG	74	8	5.85 lbs.
MSBHZ	1 GANG HORIZONTAL DEVICE BOX	1 GANG	22.5	24	7.60 lbs.
MSB22+	1 GANG DEVICE BOX PLUS	1 GANG	22.5	24	7.45 lbs.

